

REDEFINING CONVENIENCE AND PERFORMANCE IN SINGLE-SERVE PACKAGING

WITH OUR AUTOMATIC PACKAGING MACHINES



**PRECISION
FILLING**



**INDUSTRY
4.0 READY**



**USER-FRIENDLY
HMI**



**COMPACT &
MODULAR**

alpha

Alpha is a fully automatic, multi-lane packaging machine designed to handle a wide range of products across industries. Compact yet powerful, it combines modular flexibility with cutting-edge brushless motor technology for precise, waste-free dosing from 0.2 ml to 30 ml. With customizable sizing formats and a sleek, modern design, Alpha delivers high efficiency and reliability in every pack.



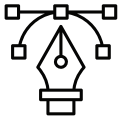
High-Speed Precision You Can Rely On

- Fully automatic multi-lane VFFS system
- Produces up to 16,000 units/hour
- Filling precision up to $\pm 0.5\%$
- Brushless motor prevents costly overfilling
- Fills 0.2 ml to 30 ml



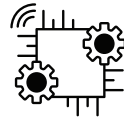
Maximum Yield, Minimum Waste

- Customizable sachet sizes and shapes
- Drop, Square, or Half-Moon openings
- Inline coding ensures full traceability
- Synchronization ensures pre-printed film alignment
- Complies with GMP, CE/FDA standards



Design Freedom with Zero Downtime Hassles

- Compact anti-vibration solid steel frame
- Changeover in under 30 minutes
- Integrated C.I.P. for quick cleaning
- Compatible with compostable, recyclable films
- Industry 4.0 certified smart management



Smart Integration in a Compact Format

- Space-saving 2100x1300x1700 mm footprint
- 15" touchscreen with recipe management
- Up to nine brushless motors
- Automatic film handling and reel shafts
- Handles liquid, gel, semi-solid products

TECHNICAL DATA

Production capacity	up to 300 units/minute
Changeover time for complete pack change	30 minutes
Number of packaging lines	6
Film reel consumption	Up to 5000mm /min
Standard weld dimensions	5 mm
Machine colour	RAL 5026
Electronic parts	Standard IP55, IP67 on request
Standard Electronics	PLC or motors on request 10 brushless motors 1 asynchronous pump for filling hopper or direct dosage "Intelligent Power Management"
Dimensions of V-Shapes pack	Height from 50 to 100mm/1.969" to 3.937" // Width from 40 to 100mm/1.575" to 3.937"
Air Pressure	7 bar, 600 NI/H
Electric power	28 Kwh
Weight (maximum)	3000 kg / 6612lb
Machine Footprint	2500mm x 2000mm x 2000mm (H) // 98.42" x 78.74" x 78.74"

Contact our Sales Team:

✉ Email: packaging@v-shapes.com

R&D Centre and Machine Manufacturing Plant:

Via Persicetana, 20B - 40012 Calderara di Reno (Bologna), Italy

Sales and Service Europe:

Via Persicetana, 20B - 40012 Calderara di Reno (Bologna), Italy

Sales and Service India, Asia, Middle east:

C-106, Hind Saurashtra Industrial Estate, Andheri-Kurla Road, Marol Naka, Andheri (East), Mumbai 400059, India

MADE IN ITALY



Scan the QR Code or visit
www.v-shapes.com
to know more.

**CONTROL
PRINT**

V-Shapes - a division of CP ITALY S.r.l.
(A wholly owned Subsidiary of Control Print Ltd., India)